

DSTAR™

Mosaic's Data Profile Manager

Introducing DSTAR™

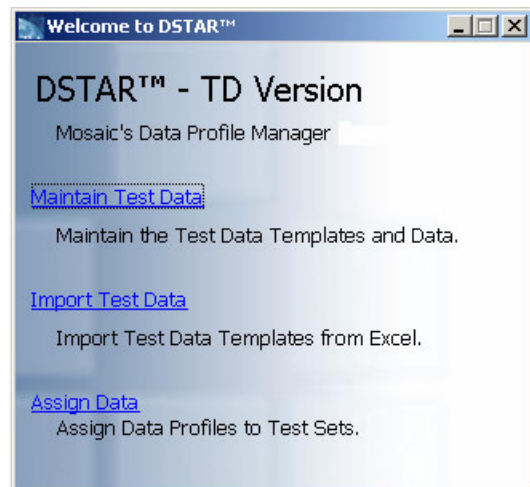
Software defects are expensive. To ensure reliable systems, automated regression testing is a necessity. Unfortunately, automation can also be expensive. The keys to cost-effective automation are maintainability and reuse. DSTAR™ is a test data management tool that is designed to make test data maintainable and re-useable. DSTAR™ fills a known gap in the industry – the creation, linking and maintenance of test data needed by your manual or automated tests. DSTAR™, part of Mosaic's Test Automation Architecture, seamlessly bridges that gap.

Key Benefits

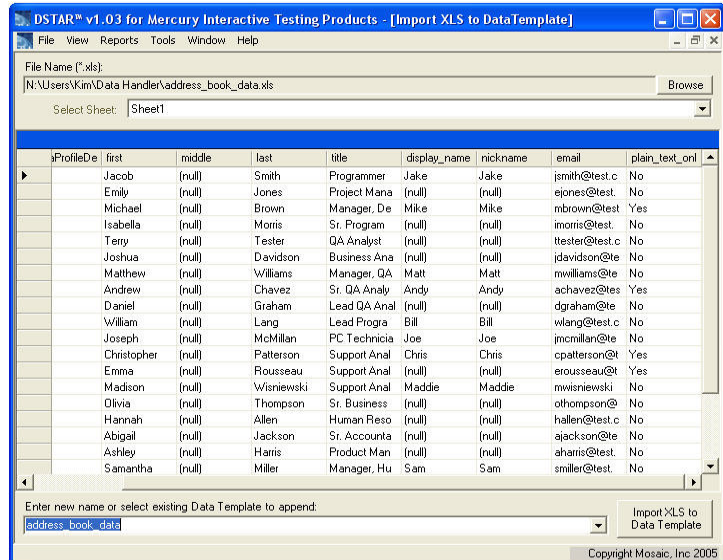
DSTAR™ complements and enhances your test planning by allowing manual and automated tests to share and reuse test data organized in data profiles. DSTAR™ maintains data profiles and makes them available for all tests – manual and automated.

Key Features

- **Maintain Data Profiles.** DSTAR™ stores your test data organized in data profiles in a database. You and your team can add, change, or delete the data at anytime.
- **Import Your Existing Test Data.** No special entry or reentry of data is required.
- **Assign Data Profiles to Your Planned Tests.** DSTAR™ integrates with the testing hierarchy in Mosaic's test planning tool, the Object Profile Builder™ or Mercury's Quality Center to manage and track the assignment of test data to your tests.

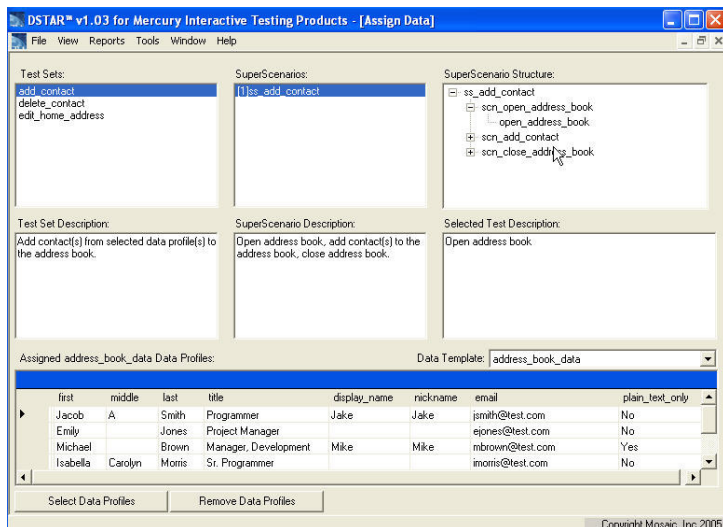


- **Organize and Reuse Data Profiles.** With DSTAR™ you can quickly identify whether the data profile you need already exists. If it does, reuse it. If it does not already exist, you can create it within DSTAR™.

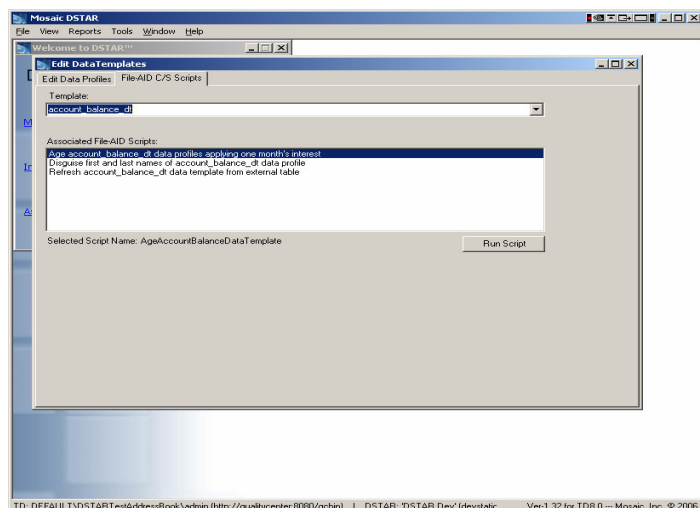


- **View Data Profile Assignments.** DSTAR™ can show you the type of data each of your tests requires and assign the appropriate data profiles.

You can assign a data profile to any relevant test. Therefore, the same data can be used with multiple tests. And test data can be assigned as late as execution time.

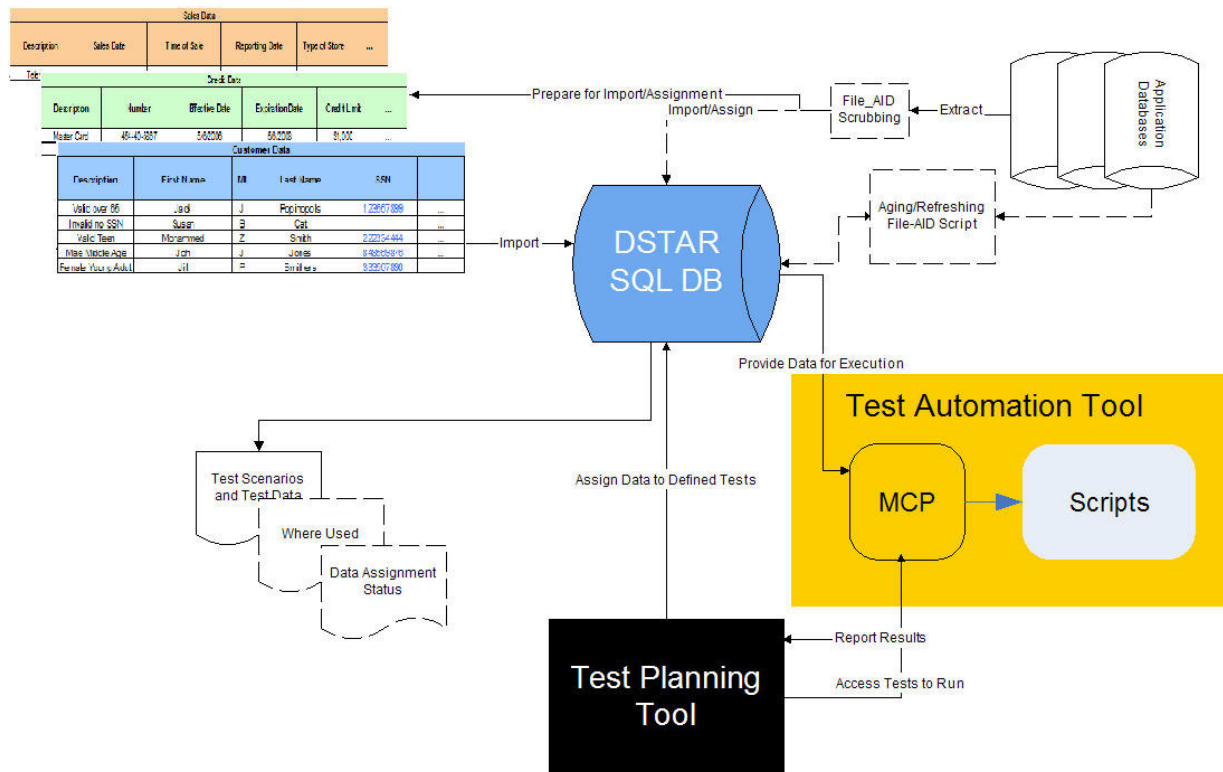


- **Interfaces with Compuware's File-AID/CS.** DSTAR™ provides an interface to Compuware's File-AID/CS to allow the test data to be aged, refreshed, extracted and updated for privacy issues. This is a powerful feature to keep your test data viable and in compliance.



DSTAR™ Implementation

The figure below illustrates the implementation of DSTAR™ for test data management.



As shown in the figure, data created in spreadsheets or extracted from your application database(s) can be imported and maintained in the DSTAR™ database. DSTAR™ then interfaces with the test planning tool (Mosaic's Object Profile Builder or Mercury Quality Center) to identify the test data relevant for the defined tests and to allow the testers to assign data row(s) from the available data templates in DSTAR™ to fulfill the needs of the tests that they wish to execute. These assignments can be changed any time prior to test execution. DSTAR™ then provides the test data at execution time to the manual tester via reports.

The figure also illustrates the included templates for both the Master Control Program (MCP) and action scripts. These components enable Mosaic's object-driven test automation approach. When the automation components are implemented, DSTAR™ can also pass the needed data to scripts via the MCP. It does this by interfacing with the test planning tool to read the manual tests, and then based on the tests and DSTAR's input, the MCP executes the necessary scripts passing the needed data.

DSTAR™ also includes an interface to File/AID/CS that enables File-AID/CS scripts to effectively maintain the test data in DSTAR™. This capability can be used to:

- Scrub the data to remove sensitive information.
- Age or refresh the test data, as required to keep the tests viable.
- Extract and populate the data.

Who Can Benefit from DSTAR™?

Manual and automated testers will find DSTAR™ essential for creating, updating and executing reusable tests. DSTAR™ will also enhance their capability to easily run regression tests. Business analysts with data-intensive or reusable use cases will also benefit from DSTAR™.

About Mosaic, Inc.

Mosaic, Inc. was established in 1988 and is headquartered in Chicago. Mosaic is dedicated to helping its clients reduce the risk of developing and maintaining complex software systems. We focus on solving the problems of delivering high quality software on time and at an affordable price.

Our clients are large organizations from a wide variety of industries. Our testing consultants are seasoned, hands-on professionals who understand the pressures faced by today's software developers and project managers.

Contact us at:
Mosaic, Inc.
205 N. Michigan, Suite 2211
Chicago, IL 60601

Phone: 312.819.2220

Web Sites:
www.mosaicinc.com
www.testablerequirements.com
www.defectmanagement.com